

WWW.CHSSB.COM

SHIJIAZHUANG CAPT POWER TRANSMISSION CO., LTD.



Shijiazhuang Factory

Shijiazhuang CAPT Power Transmission Co., Ltd.
Add: No.1 Guoxing Street, Gaocheng New District, Shijiazhuang,
Hebei, P.R. China, 052160
Tel: +86-311-68018088
Email: chssbiec@chssb.com
Web: www.chssb.com

Tianjin Factory

Tianjin CAPT Power Transmission Co., Ltd.
Add: No. 4 Workshop - 2, - 3, Optoelectronic Industrial Park, No. 335
Jinjiang Road, Tanggu Marine Science and Technology Park, Binhai High -
tech Zone, Tianjin, China, 300451
Tel: +86-022-25211016
Fax: +86-022-25210525
Email: tjcapt@chssb.com

Overseas Sales

Shijiazhuang CAPT Power Transmission Co., Ltd.
Add: 29F, Rong Tong Caijin Bldg, No.598 Zhongshan East Road, Changan
District, Shijiazhuang, Hebei, P.R. China, 050022
Tel: +86-311-68018088
Fax: +86-311-68018010
Email: chssbiec@chssb.com
Web: www.chssb.com

Domestic Sales

Shijiazhuang CAPT Power Transmission Co., Ltd.
Add: 29F, Rong Tong Caijin Bldg, No.598 Zhongshan East Road, Changan
District, Shijiazhuang, Hebei, P.R. China, 050022
Tel: +86-311-68000267
Email: chssb@chssb.com
Web: www.chssb.com

USA Distribution Center

US HQ
CAPT-USA, INC.
USA Distribution Center
New Standard Power Transmission (NSPT, Inc.)
Add: 2145 Milliken Ave, Ontario, CA 91761
Tel: (1)909-605-0688
Fax: (1)909-605-0699
Sales: sales@nspt-usa.com
Email: info@nspt-usa.com
Web: www.nspt-usa.com

石家庄凯普特动力传输机械有限责任公司



40TH ANNIVERSARY

**40 YEARS OF PRECISION
FUTURE OF POWER
TRANSMISSION**

**CUSTOM MECHANICAL POWER TRANSMISSION
AND INDUSTRIAL DRIVE COMPONENT EXPERTS**



National standard
setter



Green intelligent
manufacturing practitioner



Customized high-end
PT products manufacturer

COMPANY PROFILE



Shijiazhuang CAPT Power Transmission Co., Ltd. is a comprehensive manufacturer specializing in precision mechanical power transmission products, integrating research and development, production, and sales.

For 40 years, the company has been committed to delivering high-quality, high-precision, and efficient products to customers worldwide.

Today, the "CAPT" brand is widely recognized in both domestic and international markets as a trusted name in premium mechanical power transmission solutions.



TIMELINE



1986 June

CAPT was established.

1993 August

CAPT expanded manufacturing capacity.

1993 December

Established Tianjin Golden Elephant Power Transmission Machinery Co., Ltd.

1999 July

CAPT-USA, Inc. was established in Los Angeles, California.

2002 July

The first Chinese PT manufacturer to pass the ISO9001: 2000 QC certification via the UK's Lloyd's Register Quality Assurance Limited (LRQA).

2005 August

NSPT-USA, Inc. was established as the North and South American distributor in Los Angeles, California.

2012 October

Tianjin Golden Elephant Power Transmission Machinery Co., Ltd. was renamed as Tianjin CAPT Power Transmission Co., Ltd.

2013 January

CAPT was relocated from Shijiazhuang urban district to Gaocheng Economic Development Zone.

2006 August

Tianjin Golden Elephant Power Transmission Machinery Co., Ltd. invested in the American Hunter Casting production line.

2008 April

CAPT expanded its business range with additional investment.

2014 August

CAPT and Tsubakimoto Chain Group formed the joint venture, Tsubaki CAPT Power Transmission (Shijiazhuang) Co., Ltd.

2019 March

CAPT invested in building a new factory with annual output of near 10 million pieces of various mechanical PT and drive products.

2021 June

Relocation complete and continued investment and equipment overhaul.

2025 June

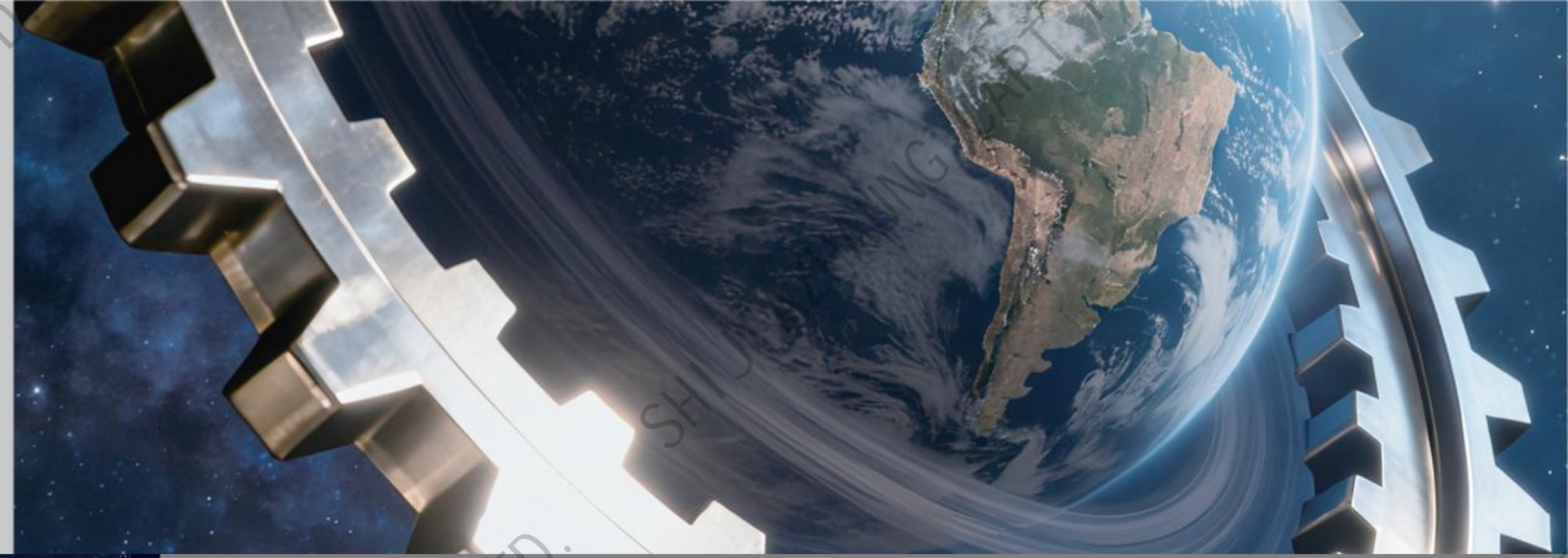
After 4 years of consolidation and further development, new products have been introduced, sales have expanded.

2026

New journey, new start!

CORPORATE CULTURE

—



SHI JI AZHAUNG CAPT POWER TRANSMISSION CO., LTD.

TRUST CAPT MANAGEMENT PRINCIPLES



Full Series of Products

8 Categories, 160 Series,
45,000 Specifications.



High-End OEM/MTO Production Experts

Customized ODM, OEM,
OBM Service available.



Strong Technical Support

Professional Technical Team,
24/7 Rapid Response, Strong
Technical Support.



Comprehensive Business Model

Flexible E-Commerce,
Customization, Shared
inventory, Small-batch retail.



Overall Solution Experts

Full life-cycle Mechanical
Power Transmission Solutions.



More Product Details

www.chssb.com/en.html



Rapid Inventory Delivery System

500,000 PCS in Stock
for rapid delivery.



Sophisticated Production System

Full CNC Manufacturing
Process Production.



Intelligent Digital Control

Smart Digital Management
through a Self-developed
Enterprise System.



Effectively Control Costs

Cost efficiency that meets
Customer expectations.



Strict Quality Control

Advanced Inspections,
Full Process Control.



Domestic And International Sales Calls

Domestic: +86-311-68018026
Overseas: +86-311-68018088

CAPT STRENGTH

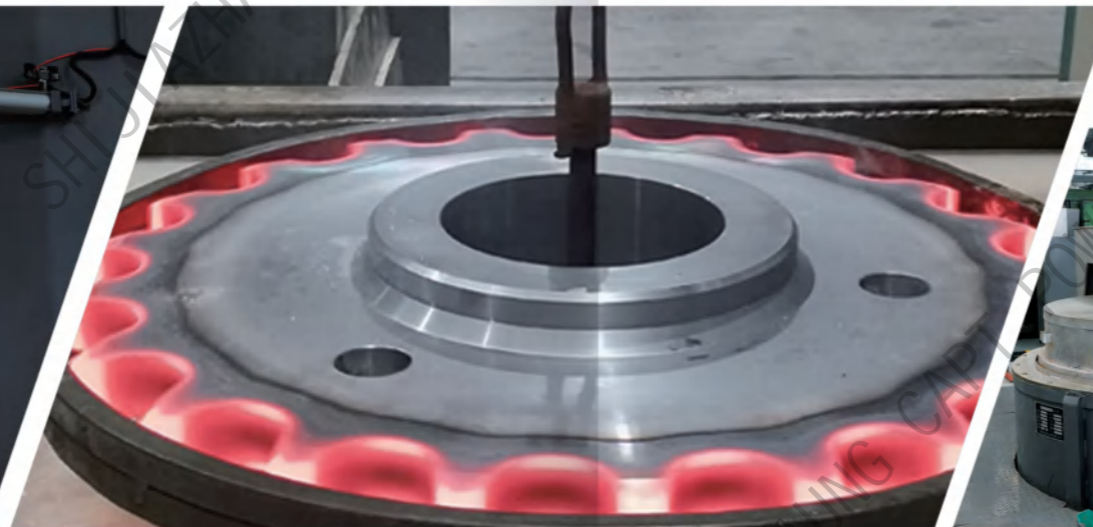
CAPT is a comprehensive manufacturer specializing in mechanical power transmission and industrial drive components.

The company operates over 700 sets of machining and auxiliary equipment including over 300 CNC lathes, 120 machining centers, and 120 specialized machines for drilling, grinding, slotting, broaching, welding, heat treatment, and surface finishing. These advanced facilities offer high precision, strong reliability, and a wide production range, enabling customized research, development, and manufacturing to deliver comprehensive industrial solutions for global customers.



ORGANIZATION STRUCTURE

- Shijiazhuang CAPT Power Transmission Co., Ltd.
- Tsubaki CAPT Power Transmission (Shijiazhuang) Co., Ltd. (joint venture)
- Tianjin CAPT Power Transmission Co., Ltd.
- CAPT-USA, Inc.
- New Standard Power Transmission (NSPT-USA, Inc.)



ENVIRONMENTAL SCALE

Plant area: 51,300m²/560,000ft²

Building area: 44,100m²/475,000ft²

Office and auxiliary facilities area: 7,200m²/78,000ft²



PRODUCTION ENVIRONMENT



1986
Built In

2.48+
Acre of Land

160+
Types of Product

45000+
Product Specifications

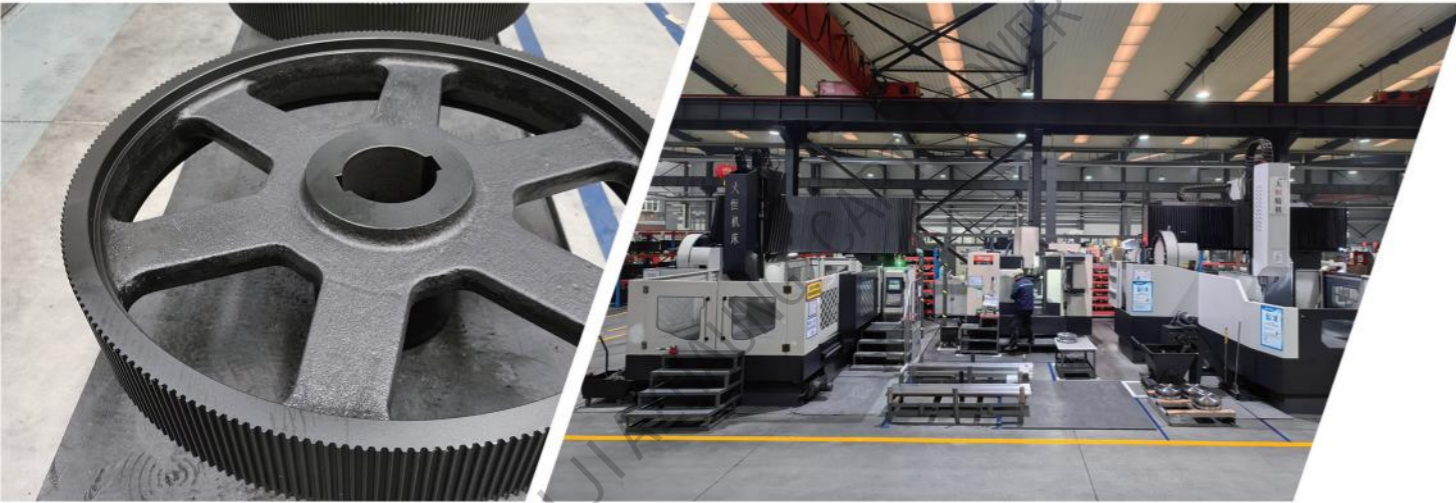
PRECISION | RELIABLE | DURABLE
PRECISION AND INTELLIGENT
MANUFACTURING, CONTINUOUSLY
MEETING CUSTOMER NEEDS

As the oldest privately owned power transmission manufacturer in China, CAPT takes great pride in its commitment to high-quality products, systematic improvement, and continuous optimization. Every product we deliver embodies our unwavering dedication to excellence and precision craftsmanship.

QUALITY CONTROL



TSUBAKI CAPT



Innovation in Motion
TSUBAKI — **CAPT**
 POWER TRANSMISSION

Tsubaki CAPT Power Transmission(Shijiazhuang) Co., Ltd.(TCP), founded in 2014 as a joint venture between Shijiazhuang CAPT and the Tsubakimoto Chain Group, combines Japanese management principles with Chinese manufacturing excellence to produce high-quality, made-to-order power transmission components such as sprockets, timing pulleys, keyless locks, racks, and bevel gears. With strong capabilities in custom production, assembly, and installation, TCP serves both domestic and global markets with precision and reliability.



TIANJIN CAPT



CAPT-TIANJIN
 POWER TRANSMISSION

Tianjin CAPT specializes in small-batch precision machining, operating over 60 sets of advanced equipment, including CNC machining centers, CNC lathes, gear hobbing and shaping machines, hob grinders, broaching, and sawing machines.



CAPT-USA, INC. US HQ



CAPT-USA, Inc. (est. 1999) and NSPT, Inc. (est. 2005) are located in Ontario, California, with a combined warehouse area of 4,600 m²/500,000 ft², serving as CAPT's North American distribution centers. They handle customer service, product storage, logistics, and import operations. Standard delivery is as fast as 5-6 weeks by ocean, while Fast Pass production service enables 7-day manufacturing and door-to-door delivery. Additional services include providing comprehensive support and inventory visibility for VIP and regional customers across North and South America.



PRECISION · RELIABLE · DURABLE · EFFICIENT

CAPT ENHANCING EFFICIENCY OF MECHANICAL POWER TRANSMISSION

CAPT's power transmission products span 160 series with over 45,000 standard specifications. Leveraging advanced technology and reliable quality, CAPT exports over 85% of its products worldwide, serving as a trusted supplier in the European, U.S., and Japanese markets.

SPROCKETS V-BELT PULLEYS TIMING PULLEYS TAPER BUSHINGS

KEYLESS LOCKS GEARS RACKS COUPLINGS GEAR OPERATORS

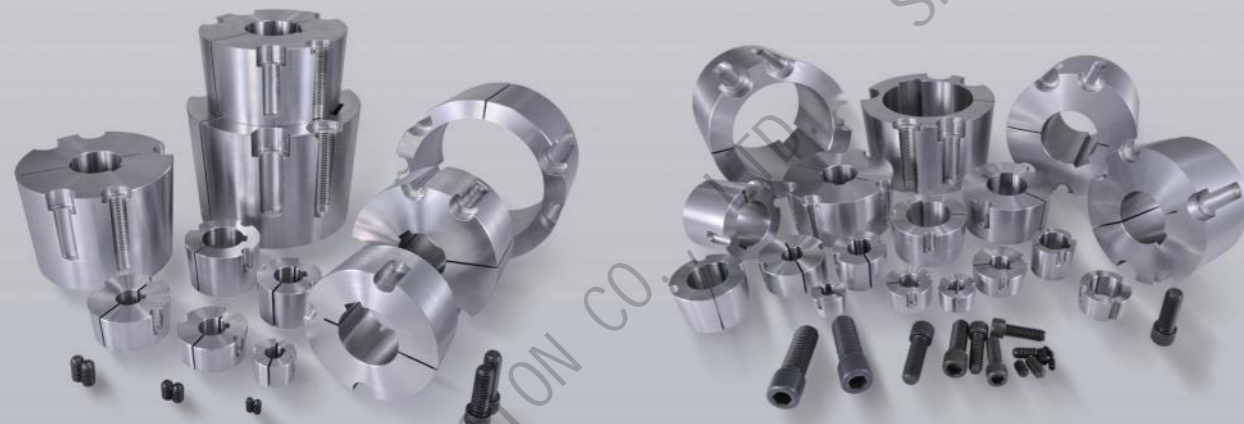


TB TAPER BUSHING (1008-120100) FULL SERIES C45 STEEL

High strength · High precision · Cost-effective · Safe & reliable ·
Environmentally Friendly · Energy-saving



TB Taper
Bushings
—Series A
—Series B
—Series C
—Series D



VARIOUS STANDARD V-BELT PULLEYS IN STEEL

CAPT TB Taper Bore V-Belt Pulleys

Driving pulleys (≤ 200 mm) are made of C45 steel, while driven pulleys (200-1,250 mm) use high strength ductile iron (QT450-10) or gray iron (HT250).

Available in European (DIN) and American (ANSI) standards.

Including variable pitch, taper bore, and finished bore types.



ULTRA-LOW TEMPERATURE TRANSMISSION SERIES



Made from QT350-22L ductile iron, these components - including taper bushings, pulleys, sprockets, gears, couplings, and housings - are engineered for extreme cold environments (down to -40°C). They offer tensile strength ≥ 350 Mpa, yield strength ≥ 220 Mpa, and elongation $\geq 22\%$, ensuring durability and reliability under harsh conditions.

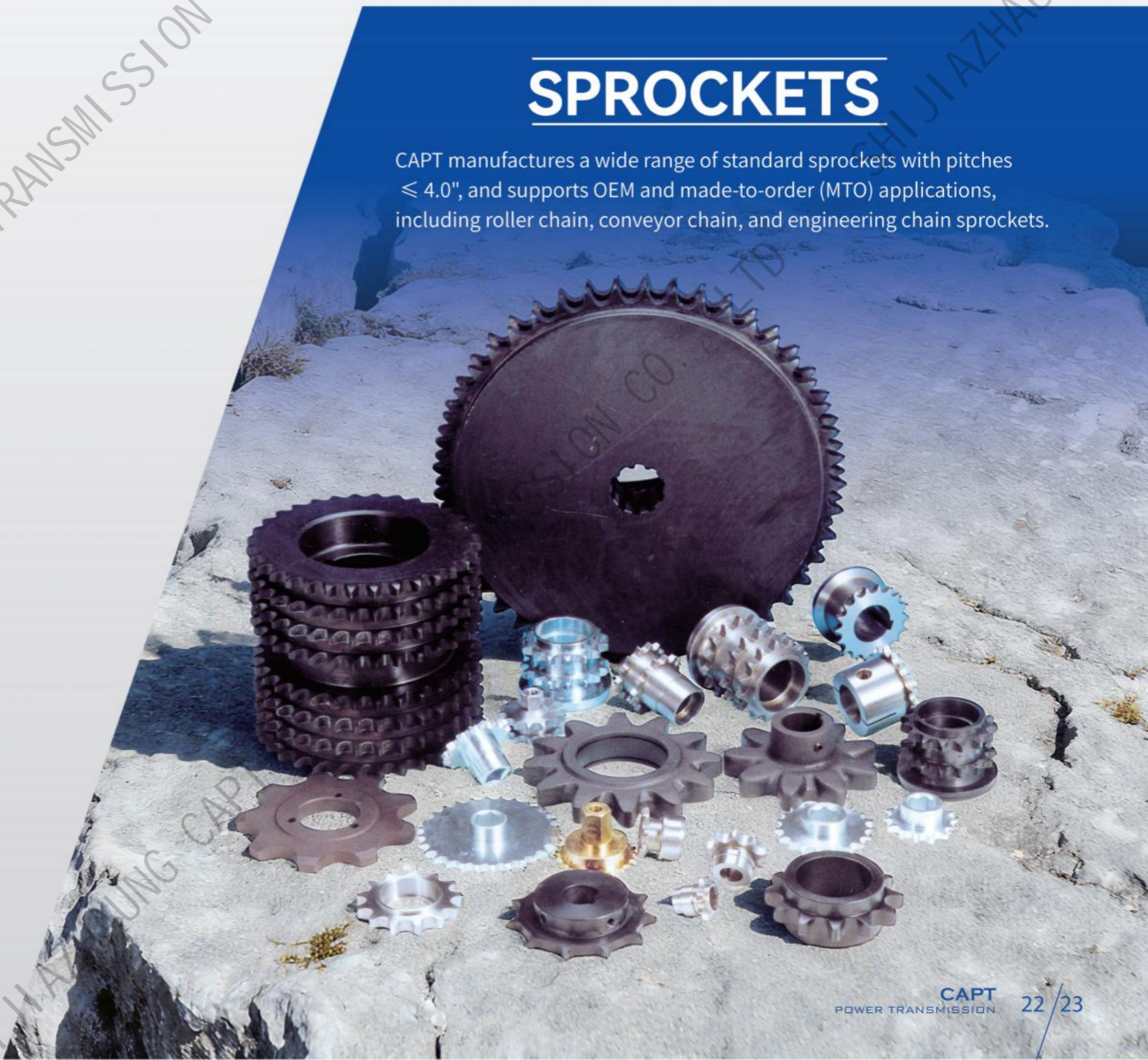


QT350-22L
LCC(A352)



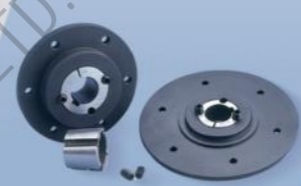
SPROCKETS

CAPT manufactures a wide range of standard sprockets with pitches ≤ 4.0 " and supports OEM and made-to-order (MTO) applications, including roller chain, conveyor chain, and engineering chain sprockets.



STEEL TB TAPER BUSHING SERIES AND APPLICATIONS

CAPT High-Strength C45 Steel BTL Taper Lock Bushings are available in full sizes (1008-120100) and comply with JIS, DIN, ANSI, and GB standards. Offering high precision and superior strength, they outperform cast iron bushings and are widely used in sprockets, pulleys, timing pulleys, gears, and couplings.



QTL · STL · XTB BUSHING SERIES

QTL Series: includes JA~S bushings and weld on hubs.
 STL Series: includes G~Y0 bushings and weld on hubs.
 XTB Series: Heavy-duty type ranging from XTB15~XTB120 and weld on hubs.

US ANSI STANDARD BUSHINGS

Replacements for QD®, SPLIT TAPER®, XT®





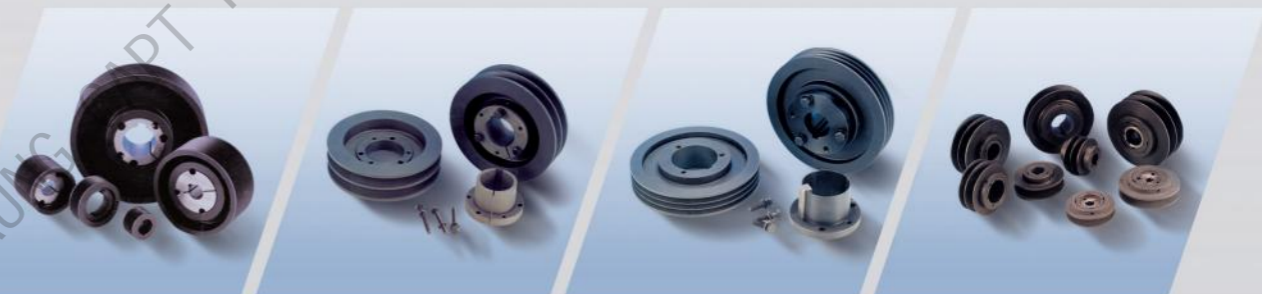
TIMING PULLEYS

CAPT timing pulleys are available in three main categories: HTP/3M-20M, XL-XXH, and AT/T 2.5/5/10, with additional precision MTO and OEM options.



V-BELT PULLEYS

CAPT offers a complete range of sheaves and pulleys conforming to European (DIN) and American (ANSI) standards, with additional OEM and MTO options available.



KEYLESS LOCKS

The CAPT-LOCK range covers B, D, E, T, F (A/B), S (K/D), HL, and ML types. With versatile compatibility, it meets the diverse requirements of different customers.



COUPLINGS

CAPT offers a wide range of couplings, including but not limited to HRC, GE, CL, KC, GRL, GF types etc. Customized MTO/OEM and large-size couplings are also available in various standards.



GEARS, RACKS, WORM AND WORM GEARS

CAPT manufactures gears, racks, worm and worm gears. CAPT can offer racks modules from M1.0 to M20.



VALVE ACTUATORS

CAPT valve actuators include the XJ, FP, and VT series, designed for use with butterfly valves, ball valves, and remote-control valves.



HIGH-END CUSTOMIZATION

HIGH
DIFFICULTY

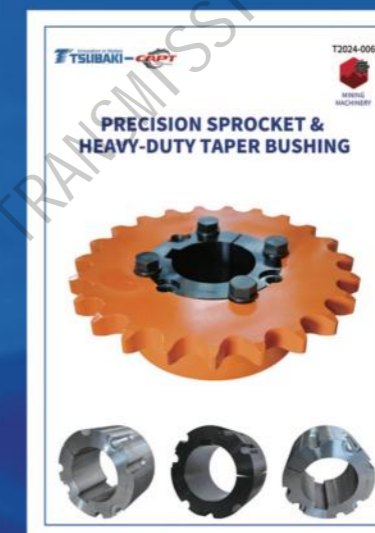
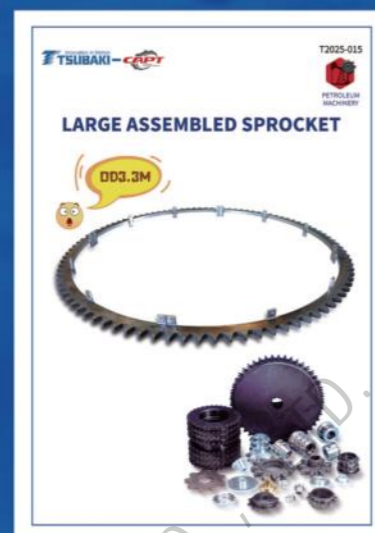
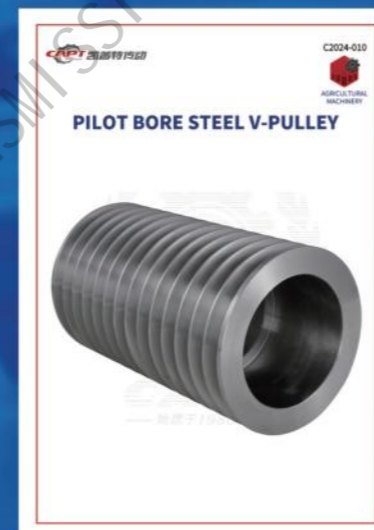
LARGE
PARTS

SPECIAL
PARTS

EXCLUSIVE
PARTS

Experts in production of custom PT products !

In addition to a full range of standard products, CAPT offers precision customization for special applications, industries, environments, materials, and processes - including large-size, heavy-duty, and non-standard designs.






OEM/MTO PRODUCTS


CAPT delivers OEM/MTO solutions with strong production, engineering, and quality control capabilities, providing customized products recognized by customers worldwide for their precision and reliability.





APPLICATION AREAS





- 


FEED MACHINERY
- 


FOOD MACHINERY
- 


TEXTILE MACHINERY
- 


MINING MACHINERY
- 


AGRICULTURAL MACHINERY
- 


PACKAGING MACHINERY
- 

FIRE FIGHTING EQUIPMENT
- 

LOGISTICS MACHINERY
- 

MEDICAL EQUIPMENT
- 

PETROLEUM MACHINERY
- 

PRINTING MACHINERY
- 

WOOD PROCESSING

CERTIFICATIONS

- National high-tech enterprises
- National technology-based SMEs
- Hebei technology-based SMEs
- Hebei Innovative SMEs
- Hebei manufacturing industry individual champion
- Hebei Specialization, refinement, special & new SMEs
- Hebei Industrial Enterprise R & D Institution (Level A)
- Hebei Integration of information and industrialization demonstration enterprises
- Drafting unit of “GB/T 32220-2015 taper bush, types, size and basic parameters”
- Drafting unit of “GB/T 11361-2018 Synchronous belt pulley-trapezoidal toothed pulleys with pitch code MXL, XXL, XL, L, H, XH, and XXH”
- Drafting unit of “GB/T 11356.2-2023 Belt drives -- Geometrical Inspection of grooves for classical and narrow V-pulleys Part 2: System based on effective width”

